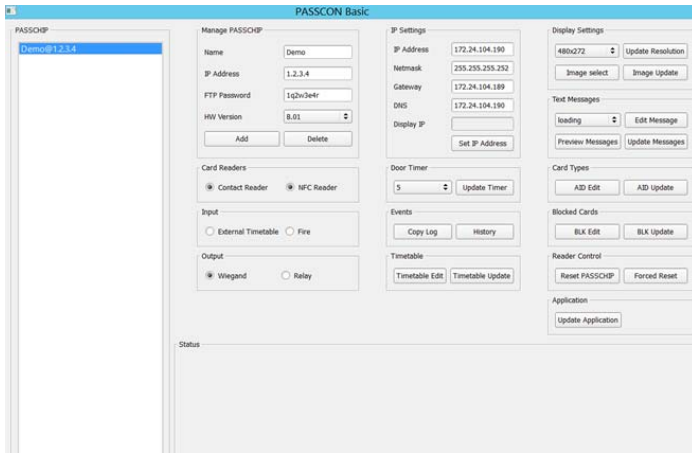


PASSCON®

Basic



Represents an advanced programming and configuration tool for PASSCHIP range of self service ID chip readers.

It provides an user friendly interface that simplifies the PASSCHIP control.

Offers a centralized Ethernet administration, using unique software functions for all the network; important savings are made in terms of time and specific resources of the security managers.

Facilitates PASSCHIP integration with CCTV, fire and intrusion detection through Wiegand, Ethernet and Serial interface.

Main Functions

Complete IP control: Configuration, Administration, User Management, Monitoring and Recording

Centralized network upgrade of readers while running using an user friendly interface

Centralized access to internal PASSCHIP history resources, including sincronized time stamp

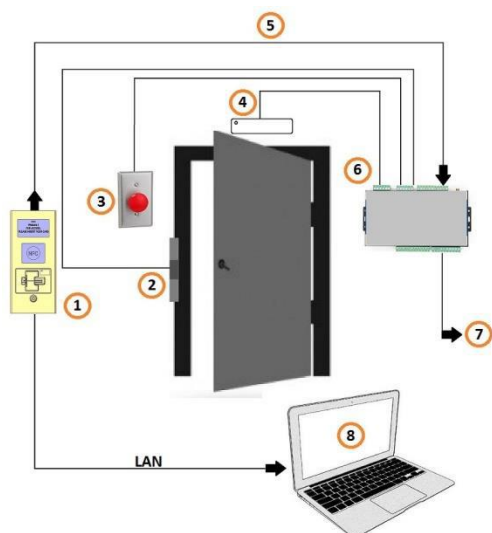
Centralized cards' management, including BLACK LIST

Benefits

- Protection of customers during self-service procedures
- Protection of ATMs and banking assets against unauthorized usage
- Extremely reliable product with an excellent ROI rate
- Proven long life service
- May be integrated with third parties security software, including biometric applications
- May be linked and integrated with CCTV, fire and intrusion detection
- Excellent substitute to human guard patrol service

Installation

Configuration example of PASSCHIP with door module:



- 1 = PASSCHIP;
- 2 = Door lock;
- 3 = Exit button;
- 4 = Door magnetic sensor;
- 5 = Communication between readers and control unit;
- 6 = Control unit;
- 7 = Wiegand communication to an external access control system;
- 8 = PC with PASSCON Basic parameterization software via Ethernet

Ordering Information

- PASSCON BASIC: Administration platform software, unlimited number of panels, one user
- PASSCON GUI: Administration graphical software 0->100 panels, one simultaneous user
- GSSACDU: Upgrade option for GSSACD: 100->unlimited panels, one simultaneous user
- SMUS: Additional simultaneous user for GSSACD

Technical Specifications

Computer Requirements	Windows XP or higher Intel CORE 2 or higher 32 MB of RAM 100 MB HDD free space CD ROM player, keyboard and mouse
PC Configuration	Max number of connected PC with running PASSCON software: 1 with basic license, unlimited according additional licensing
Panels Configuration	Max number of panels on administration platform: unlimited(limited functions) Max number of panels on graphical platform: 100, unlimited according additional licensing
Users Configuration	Max number of simultaneous users: 1, unlimited according additional licensing
Communication with PASSCHIP	Ethernet
Transfer of parameterization	On line, during PASSCHIP functioning
NTP	YES
Black list management	YES, online programable for maximum 1 000 card profiles
Panels' History Log access	YES, limited to 5MB, aprox.10 000 events with time stamp (panel's capacity)
Language	English